



*Seville, to feel it  
you must experience it*

# abba Sevilla hotel

---

<sup>01</sup> Location

---

<sup>02</sup> Hotel

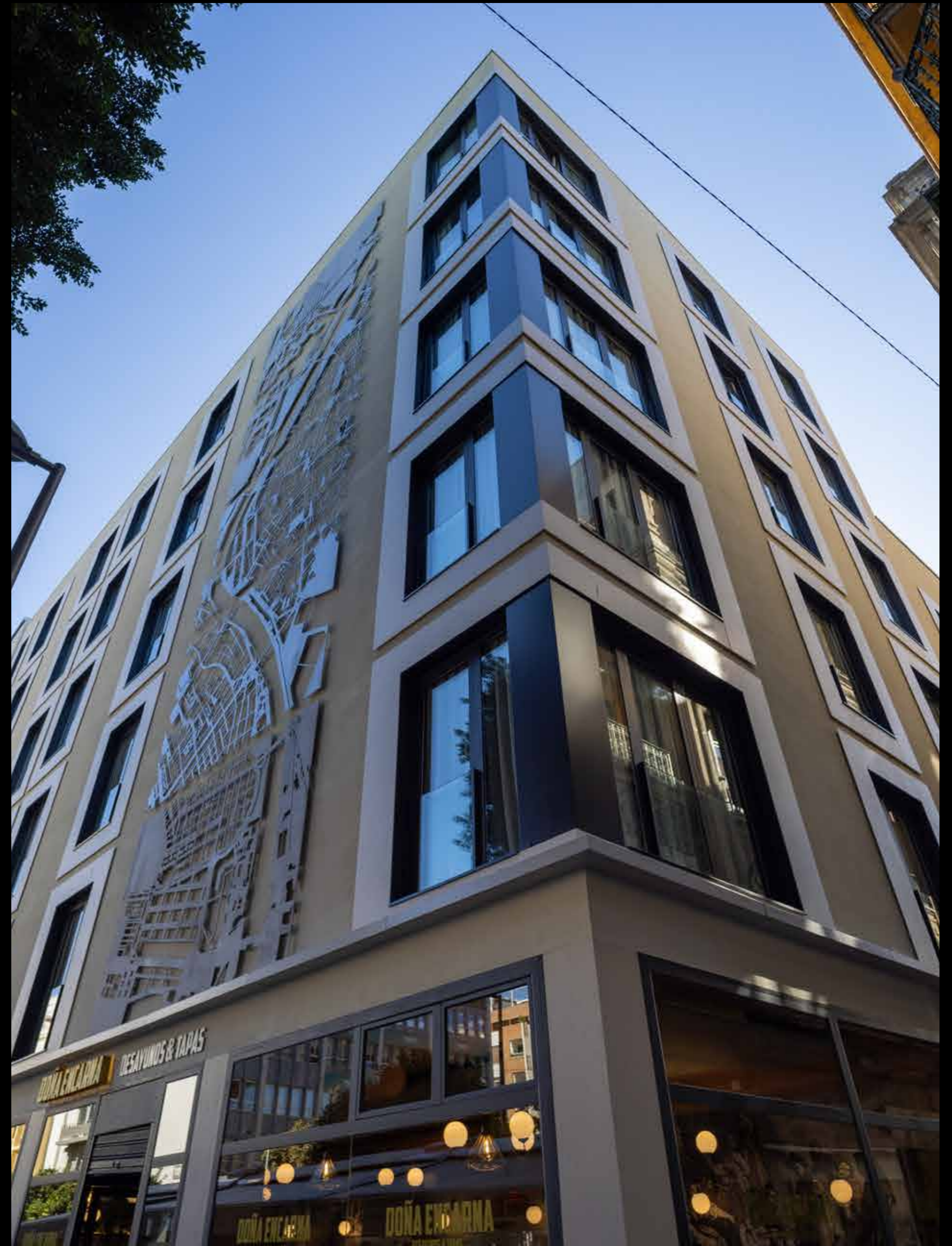
---

<sup>03</sup> Rooms

---

<sup>04</sup> Services

---



01

# Location

In the heart of Seville



abba Sevilla hotel has a privileged location. Located in Plaza de la Encarnación, it is in the historic, commercial and leisure center of Seville, very well connected to public transport and the Santa Justa train station and AVE high speed train station.

Our hotel is just a few minutes walk from the main tourist attractions: Giralda, Seville Cathedral and Reales Alcázares, among others. One of the main attractions of the city, the Setas de Sevilla, are in front of our hotel.

The city offers many gastronomic, cultural, and leisure options for all tastes, which makes it an ideal destination for family or friends but also for business trips.

Let yourself be carried away by the cheerful character of Seville, a city rich in history, gastronomy, and folklore.

02

# Hotel

The hotel is located in a new construction building in the center of Seville. The hotel jewel is The Roof Giralda, the trendy terrace in Seville, an incomparable space where you can enjoy the best cocktails and gastronomy with unique views of the city.



03

# Rooms

Rooms and suites at abba Sevilla are equipped with the latest technological advances, free high-speed WiFi connection, minibar, 4K TV, hairdryer, desk, kettle and many other amenities that will make you feel at home.

abba Sevilla also offers connecting rooms and accessible rooms.

## TIPOLOGÍA

Cosy

Deluxe Giralda View

Junior Suite Giralda View

Deluxe

Deluxe Triple

abba Family 4

Superior with Terrace

Junior Suite

Suite Prestige



# Cosy

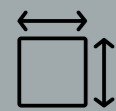
## Capacity for 1-2 people

All Cosy rooms are designed with a modern and contemporary style, and offer everything necessary to ensure the comfort and rest of our guests, in addition to all the facilities to work on a business trips.

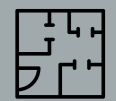
They have air conditioning and bathroom fully equipped with amenities, hair dryer and increased mirror.



1/2 people



21 - 28 m<sup>2</sup>



### Room

Two beds (2 m x 1 m) and one bed (2 m x 2 m)

---



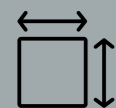
# Deluxe Giralda view

## *Capacity for 1-2 people*

All Deluxe rooms enjoy views of Giralda. They are designed with a modern and contemporary style, and offer everything you need to ensure the comfort and rest of our guests, in addition to all the facilities to work on their business trips. The rooms have air conditioning and fully equipped bathroom with amenities, hair dryer and magnifying mirror.



1/2 people



24 - 29 m<sup>2</sup>



### **Room**

Two beds (2 m x 1 m) and one bed (2 m x 2 m)

---



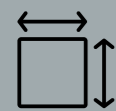
# Junior suite Giralda view

## *Capacity for 1-2 people*

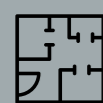
Wide suites equipped with 200x200cm marriage bed overlooking the Giralda. They have air conditioning, Nespresso coffee maker, an ironing center, turndown service and a fully equipped bathroom with hair dryer and magnifying mirror, in addition to a wider range of amenities, bathrobe and slippers. They all have a small balcony.



1/2 people



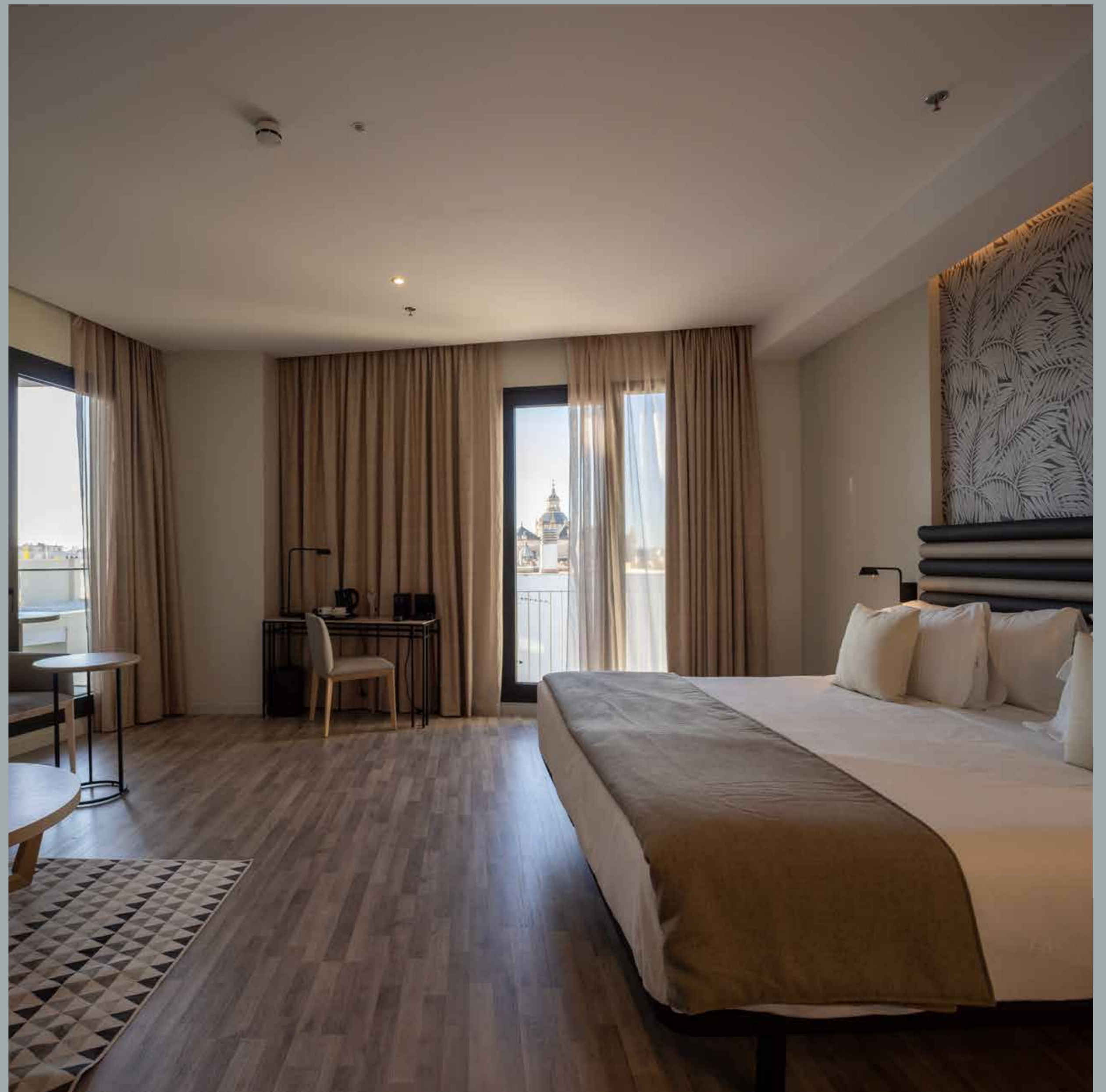
38 - 44 m<sup>2</sup>



### **Room**

Two beds (2 m x 1 m) and one bed (2 m x 2 m)

---





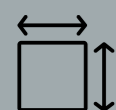
# Deluxe

## *Capacity for 1-2 people*

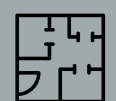
All Deluxe rooms enjoy city views. They are designed in a modern and contemporary style, and offer everything necessary to ensure the comfort and rest of our guests, as well as all the facilities to be able to work on their business trips. They have air conditioning and a fully equipped bathroom with amenities, a hair dryer and a magnifying mirror.



1/2 people



24 - 29 m<sup>2</sup>



### **Room**

Two beds (2 m x 1 m)  
and one bed (2 m x 2 m)

---



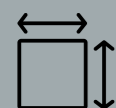
# Deluxe Triple

## *Capacity for 3 people*

All Deluxe Triple rooms are designed in a modern and up-to-date style, and offer everything necessary to ensure the comfort and relaxation of our guests. They have an extra 90x190cm bed, air conditioning and a fully equipped bathroom with amenities, a hairdryer and a magnifying mirror.



3 people



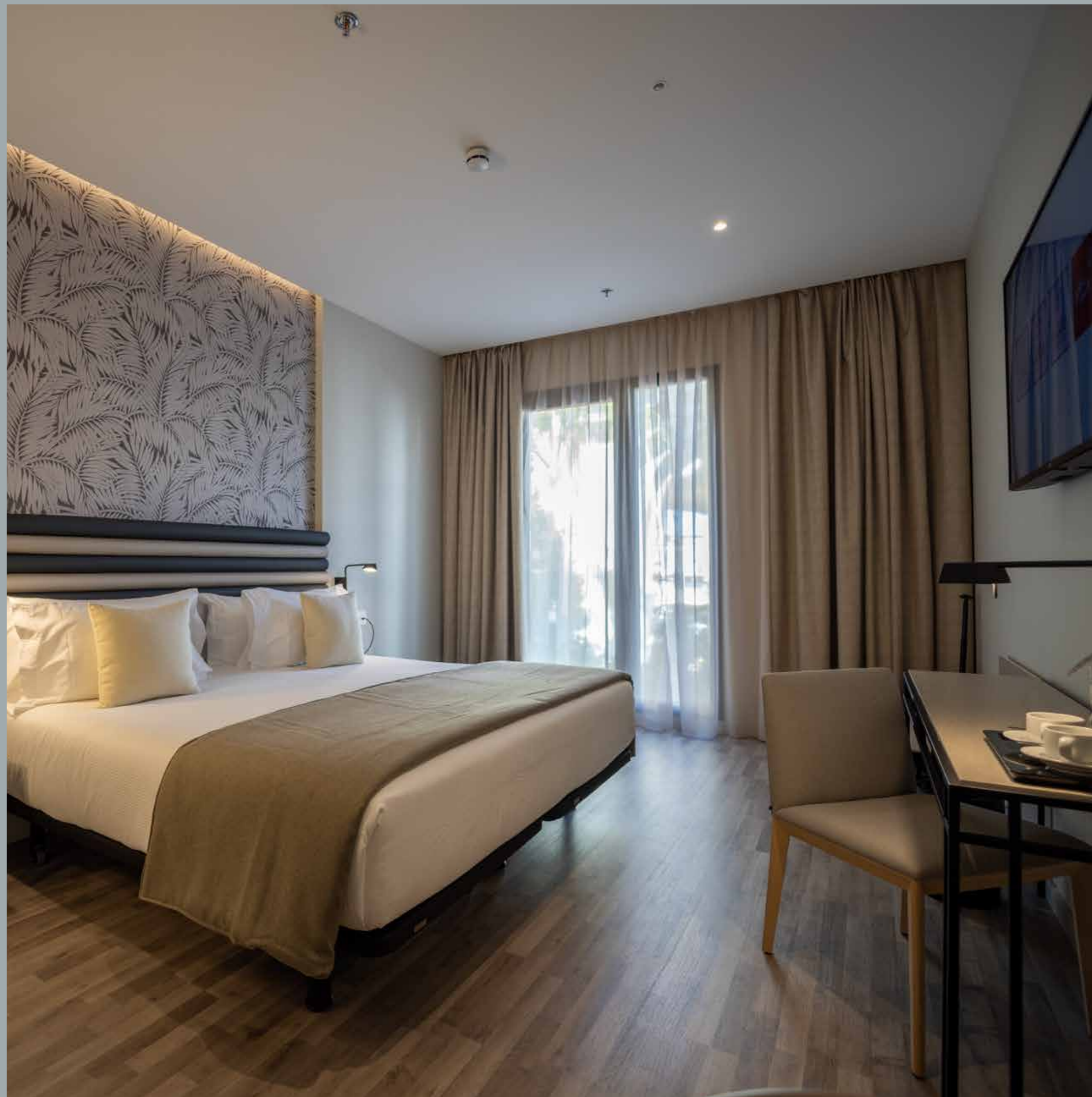
21 - 28 m<sup>2</sup>



### **Room**

Two beds (2 m x 1 m) and one bed (2 m x 2 m)  
+ temporary bed 2 m x 1,05 m

---



# abba Family 4

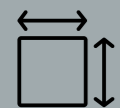
## *Capacity for 4 people*

All the abba Family rooms for 4 people are designed in a modern and contemporary style, with all the services so that our guests can enjoy their stay. Especially oriented to family reservations.

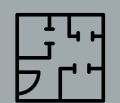
The capacity of abba Family 4 rooms is two adults and two children up to 11 years of age.



4 people



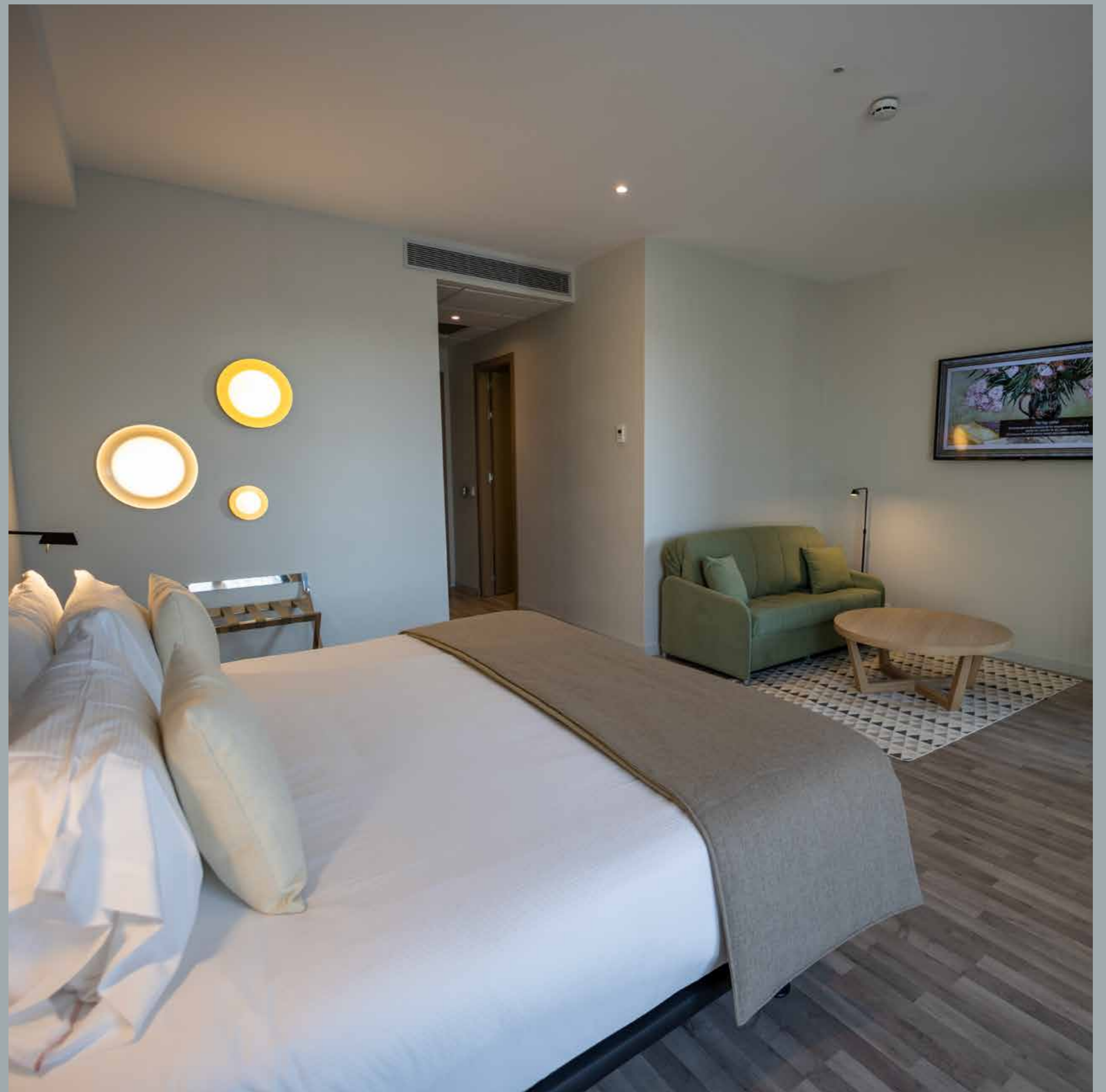
48 m<sup>2</sup>



### **Room**

Two beds (2 m x 1 m) and one bed (2 m x 2 m)  
+ sofa bed 1,90 m x 1,35 m

---



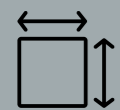
# Superior with Terrace

## *Capacity for 1-2 people*

Our superior rooms, with a very bright private interior terrace, and a modern and contemporary style. For those who want extra space and enjoy the outdoors. With a double bed or two beds and small details that make the difference.



1/2 people



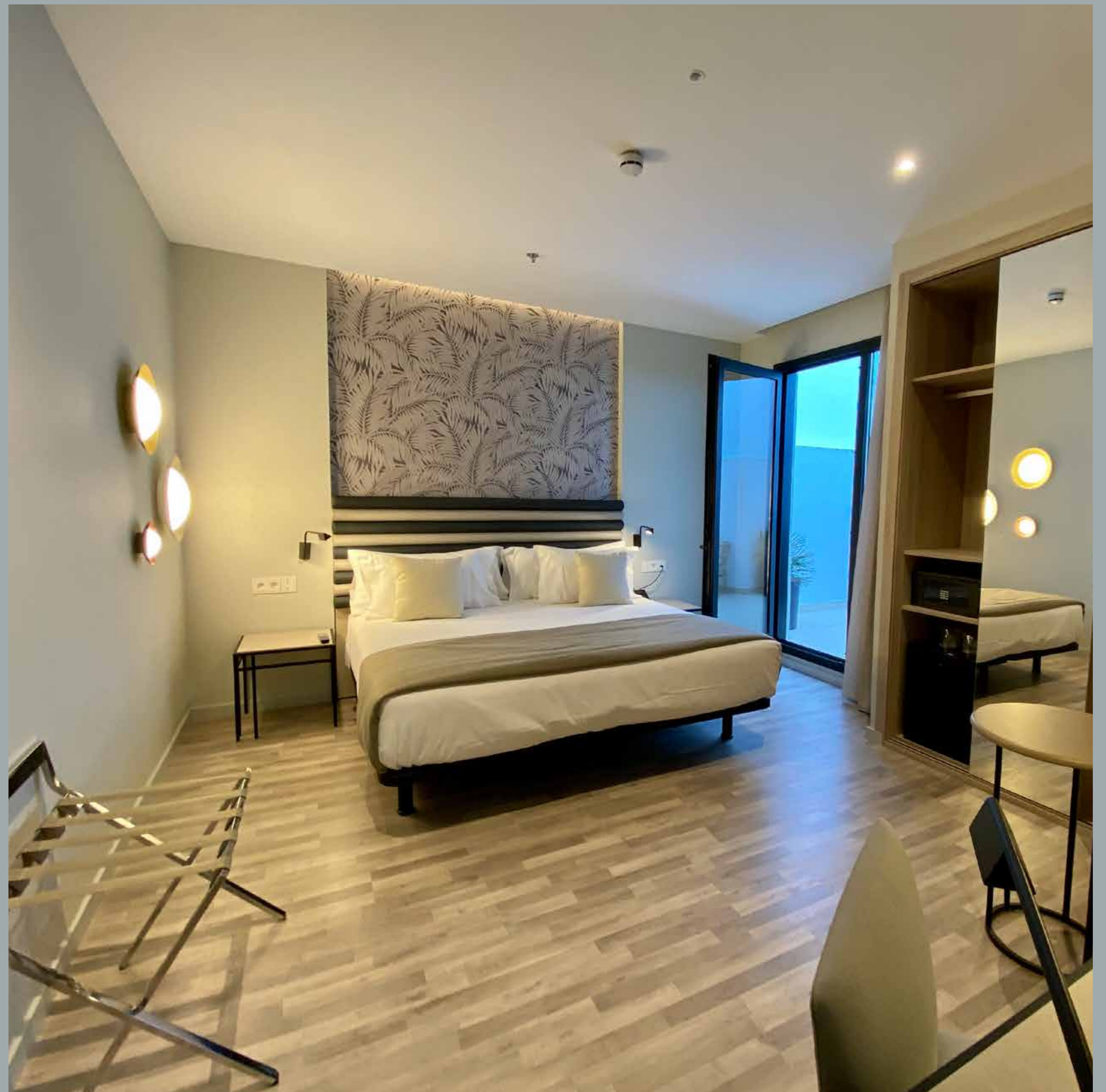
34 - 40 m<sup>2</sup>



### **Room**

Two beds (2 m x 1 m) and one bed (2 m x 2 m)

---



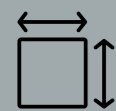
# Junior Suite

## *Capacity for 1-2 people*

Wide one-space suites equipped with a 200x200cm double bed. They have air conditioning, a Nespresso coffee machine, an ironing center, turndown service and a fully equipped bathroom with a hairdryer and magnifying mirror, as well as a range of more extensive amenities, bathrobe, and slippers. All have a small balcony.



1/2 people



38 - 44 m<sup>2</sup>



### **Room**

Two beds (2 m x 1 m) and one bed (2 m x 2 m)

---



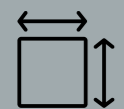
# Suite Prestige

## *Capacity for 2 people*

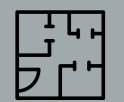
Prestige Suites are designed to offer maximum comfort together with a large outdoor terrace where you can contemplate the views and the sky of Seville. They have air conditioning, a Nespresso coffee machine, an ironing center, turndown service, and a fully equipped bathroom with a hairdryer and magnifying mirror, as well as a wider range of amenities, bathrobe, and slippers.



2 people



53 - 73 m<sup>2</sup>



### **Room**

One bed (2 m x 2 m)

---



04

# Services

A stay that guarantees the well-being and satisfaction of each of our guests.



## 24 hours reception

We adapt to your travel plan



## Gym

To exercise at any time of the day



## abba The Roof Giralda

Gastronomy and drinks with the best views of Seville



## Outdoor pool

Cool off in summer with unique views of the city



## Parking for hotel guests

Exclusive parking spaces for guests at the Saba Parking



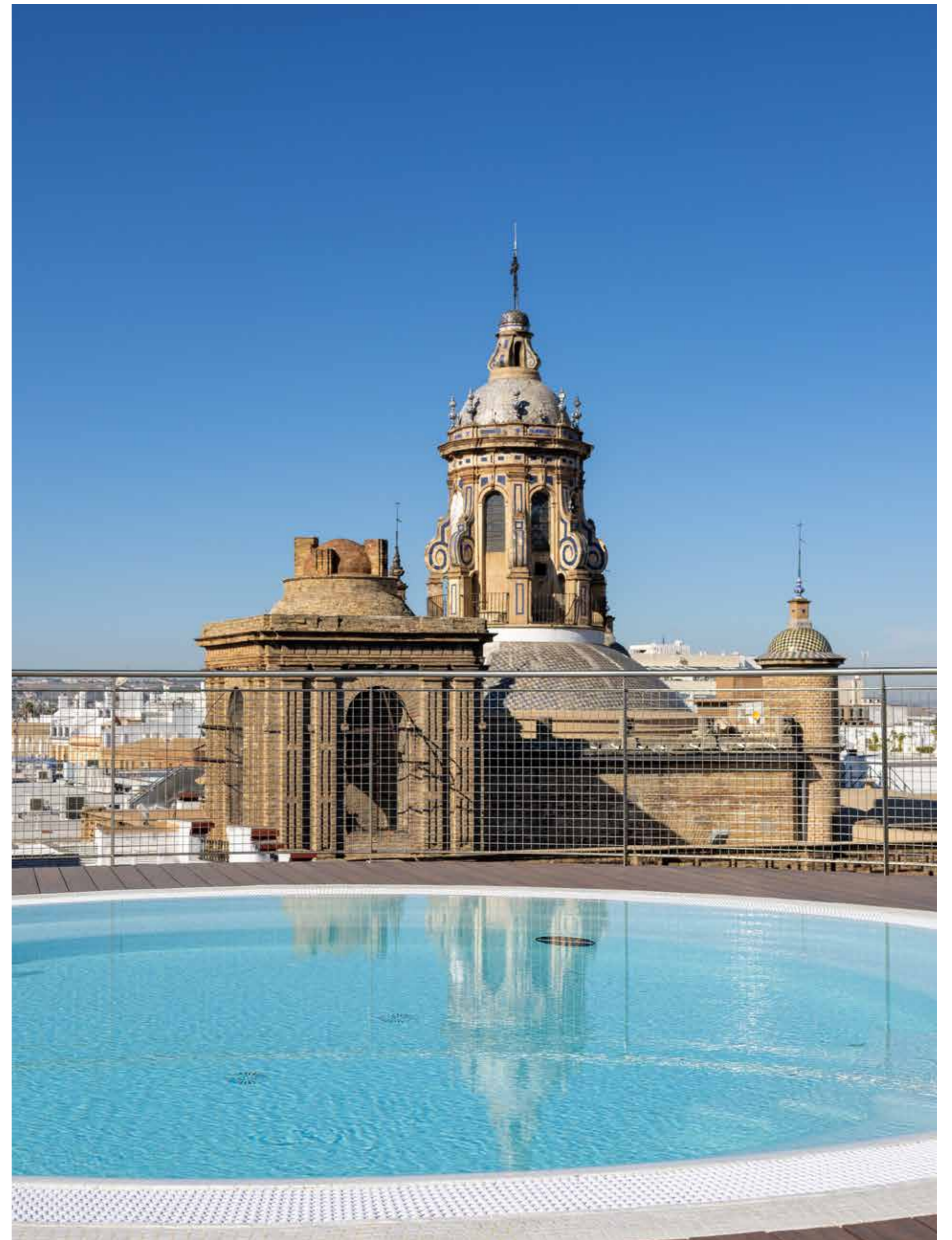
## Pet-friendly hotel

Travel with your pet with all the comforts



## For early birds

Our self-service coffee and tea service is available free of charge at the hotel lobby





Sunset from hotel's terrace





Hotel's gym



**abba Sevilla hotel**

Pl. de la Encarnación, 19  
41003 Sevilla

**T** (+34) 955 44 40 30

**W** [www.abbahoteles.com](http://www.abbahoteles.com)

**E** [sevilla@abbahoteles.com](mailto:sevilla@abbahoteles.com)

*See you soon  
at abba*

June 2023